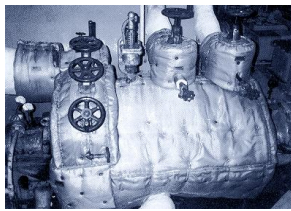


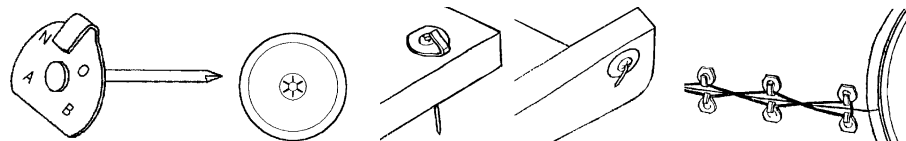
# Insulation Blanket Fasteners



Removable insulation covers have four basic parts: inner liner, insulation, outer liner and fasteners. CLIM offers a wide range of fasteners to hold in place removable insulation blankets. They provide strong, durable fixings even in elevated temperature applications.

**Closure fastening systems:** All fasteners and washers are made of 304 stainless steel material (except lacing ring - galvanised steel) for added strength and durability and service at high temperatures. Fasteners are marked NO AB to notify the blanket is asbestos free. Our range covers three different lacing options:

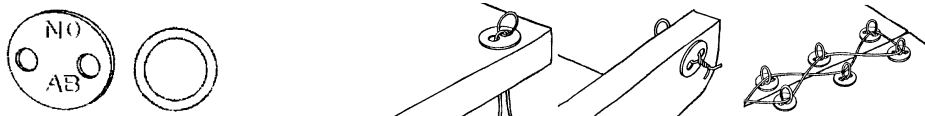
1. Lacing anchors (CAL) and locking washers (CL-1)



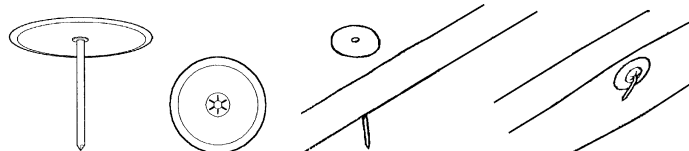
2. Lacing hooks (TOPS) and washers 2 holes (WASH)



3. Lacing washers 2 holes (WASH) and rings (RING)



**Quilting Pins:** Using quilting pins is important. They prevent the internal insulation layer from shifting between the inner and outer liners.



Quilting Pins (QUIL) go through the blanket and are held in place with locking washers (CL-2) or dome caps (CAP) that prevent damage to the insulated face of the equipment.

**Insulation fabrics:**

Coated fibreglass cloths (SI-silicone, PU-polyurethane or ALU-aluminium foil faced) available cut at desired width on request.

Code	Description	Data
250001	RING-ZNP	Galvanised steel - diameter 17mm
250002	TOPS-2H-SS	Stainless steel 304
250003	WASH-2H-SS	Stainless steel 304 - diameter 25mm
251632	CAL-63-SS	Stainless steel 304 - 2,2x63mm
252142	CAL-114-SS	Stainless steel 304 - 2,2x114mm
201832	CL-1-30-SS	Stainless steel 304 - diameter 30mm - for 2,2
253632	QUIL-63-SS	Stainless steel 304 - 2,7x63mm
254142	QUIL-114-SS	Stainless steel 304 - 2,7x114mm
201833	CL-2-30-SS	Stainless steel 304 - diameter 30mm - for 2,7
201727	CAP-27-SS	Stainless steel 304 - Dome caps for 2,7