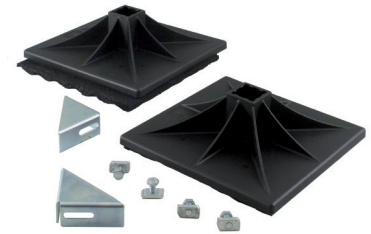


## General Description

The Square Feet are designed to support metallic structures on roofs or in industrial spaces. Suitable for 41 x 41 mm slotted channel rails.

### **The Kit Square Foot (KSF) includes :**

- \* 2 molded fiberglass reinforced polypropylene feet
- \* 2 composite recycled rubber mats
- \* 2 angle brackets
- \* 4 hexagonal head screws M10 x 25 mm, 4 M10 channel nuts



KSF-30

### **The Square Foot (SQF) includes :**

- \* 1 molded fiberglass reinforced polypropylene foot
- \* 1 composite recycled rubber mats



SQF 300

### **Features :**

- \*Excellent antivibration performances
- \*Great flexibility : Adjustable height / weight
- \*Easy and fast installation
- \*Preserves the waterproofing membrane of the roof
- \*Makes roof maintenance easier

WARNING : Incompatibility between PVC roof and composite recycled rubber.



## Technical specifications

MATERIAL	FOOT	Fiberglass reinforced polypropylene
	MAT	Composite recycled rubber
DIMENSIONS	FOOT	300 x 300 x 95 mm
	MAT	300 x 300 x 15 mm
MAXIMUM LOAD PER FOOT		500 Kg*
RECOMMENDED TEMPERATURE		-30°C / +80°C

\*The support rails not being supplied by us, loads are given for information. Please refer to the technical data of rails to know the maximum load.

## Application

Designed to support ventilation ducts, cable trays, pipes.