


Clim[®]



*Global ventilation
provider*

 **Climatech**
INTERNATIONAL

V2024.02

SOLUTION PROVIDER FOR HVAC ACCESSORIES



Having constantly invested over the years, we are now able to offer a complete solution to our clients through:

- a large range of products, manufactured in our facilities in Belgium and Spain or produced with partners sharing our vision and values
- high stock of finished products
- deliveries in less than 48 hours across Europe
- personalized products to cater for each specific markets.

Trade mark and certifications

With the aim of helping Engineers, Entrepreneurs and End Users to choose the best products, created and selected by Climatech for their quality, we have not only developed our own brand name CLIM® but also obtained many certifications.

Furthermore, Climatech is a member of several organizations.



CLIMATECH TODAY :



39 years old



49 employees



+5000 references



70+ countries

OUR RANGE OF ACCESSORIES



ANTIVIBRATION & DUCT CONNECTORS

Climatech produces in Belgium the widest range of flexible connectors, rubber and metal anti-vibration mounts and dampers. It will ensure the correct stability and comfort of the ventilation and air conditioning units.



INSULATION FASTENERS & TOOLS

Climatech, is the largest European specialist in the production of fixing elements for the insulation of ventilation ducts; we have all kinds of welding products and machinery, as well as a very special section for cladding accessories.



AIR REGULATION & DIFFUSION

Climatech has a complete range of steel and plastic valves, air intakes and outlets, as well as accessories for the manufacture of dampers for regulation. More technical products such as IRIS dampers and motorised dampers are also among our range of products.



DUCT ACCESS, SUPPORTS & FIXINGS

In this section you will find everything you need for proper ventilation installation from the basic bolts, nuts and screws to the most professional platform and supports for the completion of the ventilation equipment.



FLEXIBLE DUCTS

With GV Clim, our Italian subsidiary, we offer the widest range of flexible ventilation ducts in Italy, with over 15 different and certified models for each application required.



FLEXIBLE DUCT CONNECTORS

ROX



PVC connector

ROBG



UL PVC connector

NEO



Neoprene connector

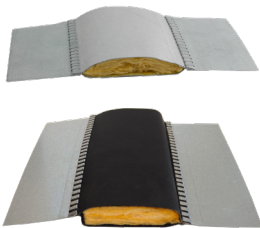
PU



Polyurethane connector

FLEXIBLE DUCT CONNECTORS

ISOLEX



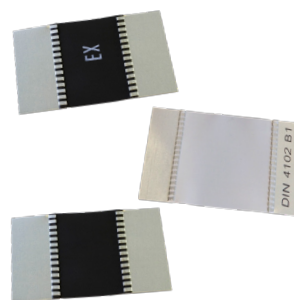
Insulated connectors

SI / SIL / ALU



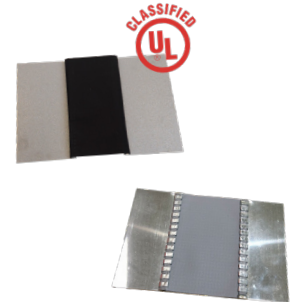
High temperature connectors

ATEX / DIN / PTFE



Special fabric connectors

24-ROBG / SS



Special connectors

CIRCULAR CONNECTORS

MAN



Connector joint in kit for circular ducts

RC-MAN



Pre-formed circular connector

MANET



Airtight circular connector

FCC



Mounting clamps



SPRING MOUNTS & HANGERS

AM5/125 - 150/550



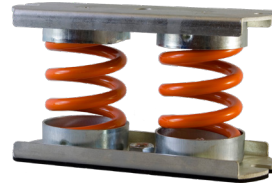
Single springs

TP / TPM/ TG



Spring hangers

AM2



Double spring

AM4



Multiple spring

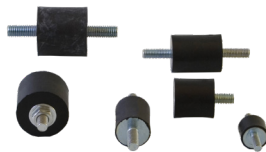
ANTIVIBRATION MOUNTS

INSTALPACK



Rubber mounts

CG



Cylindrical mounts

SG - AIRPACK



Support mounts

MGM



Rubber & metal mounts

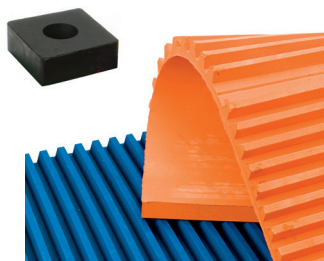
ANTIVIBRATION MOUNTS, MATS & FABRICS

TRM



Turet mounts

MIT + PA



Natural rubber mats

CHOCISOL



Antivibration waffle pad

FABRICS

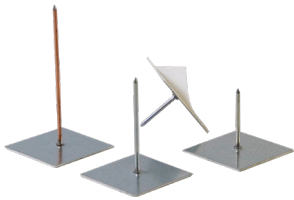


Fabrics only



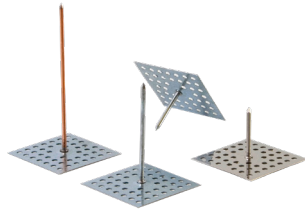
SELF-ADHESIVE AND PERFORATED HANGERS

SC



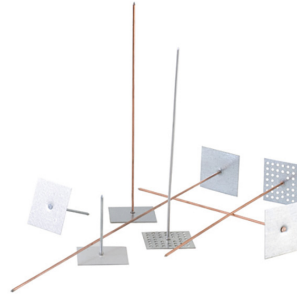
Self-adhesive hangers

GSP



Perforated hangers

SPECIAL HANGERS



XL and stainless steel hangers

CL + NSC



Washers & Caps

WELDFASTENERS

CDF



Weldfasteners

CDF-PAP / CDF-ISOL



Insulated weldfasteners

BLACK-CDF-PAP



Black weldfasteners

FDF2



Resistance weldfasteners

WELDING MACHINES

F100 ACCU



Cordless welding machine

CDW-72



Welding machine

F100 CORDLESS



Cordless welding machine (USA only)

PISTOLS & CHUCK

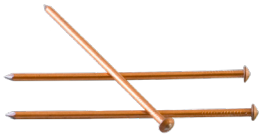


Pistols & Chuck



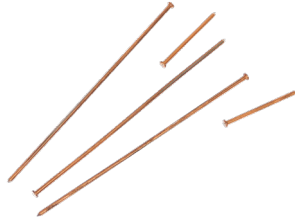
OTHER FASTENING ACCESSORIES

SP2-TC



2mm welding pins

SP3-ER



3mm welding pins

PW-33



Pinwelder

INSULSCREW



Insulation screws

CLADDING ACCESSORIES

QUIL / CAL / BH / TW



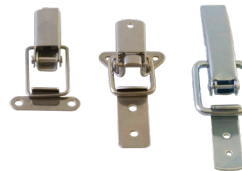
Lacing accessories

SS-FS & SS-MS



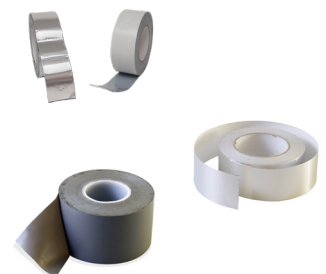
Springs

TL



Toggle latches

TAPES



Butyl, alu, PVC, ...

TOOLS

AV



Aviation snips

TSHD



Turboshear

HC1



Hole cutter

OTHER TOOLS

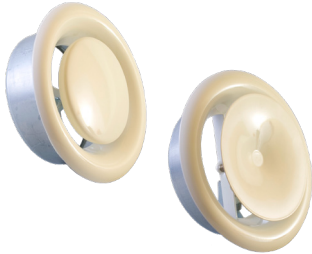


Punchers, crimpers, notchers & seamers



AIR VALVES

E-SVF / S-SVF



Exhaust and supply steel air valve

FSV / FEV



Acoustic steel air valve

PVFR



Plastic air valve

E-LAV / LNV



Exhaust airtight valve

AIR VALVES

SV-SS



Stainless steel air valve

SS-EV / SS-SV



Exhaust and supply stainless steel air valve

ALIZE



Self-regulating exhaust valve

WABO



Jet nozzle

AIR INTAKES AND OUTLETS

G-REL-SS



Stainless steel grilled louver

NAREL / AREL



Natural or painted aluminium cast louver

REL-A / SS-REL



Aluminium and stainless steel louver

SS-BL / SS-KL



Stainless steel external louver



AIRFLOW REGULATORS

RDR



Airflow regulator

IRIS



IRIS damper

IRIS INOX



Inox IRIS damper

I-CAR / O-CAR



Back draught shutter

DAMPER'S ACCESSORIES

RG-10/20/30/60



Single blade regulators

RG-90 / RG-95



Offset regulators

RG-75/85



Multiblade regulators

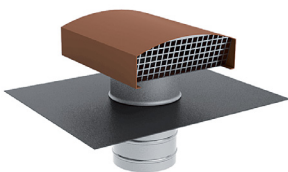
Multiblade damper hardware



Multiblade damper hardware

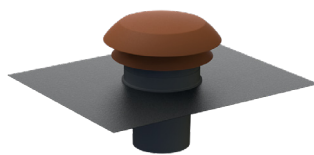
OTHER

CTM



Metal roof vent

CARA



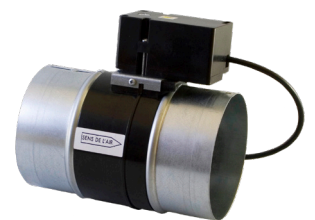
Plastic roof vent

SFM / CTP-1



Vane fasteners & instrument test port

RMVT

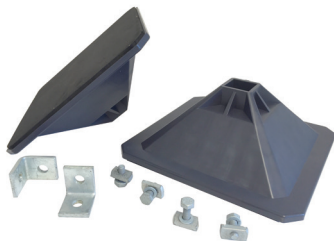


Motorised damper



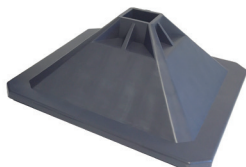
SUPPORT

B-KSF



H-frame
kit

B-SQF



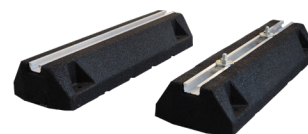
Plastic square
feet

BPF - XPF



Support
system

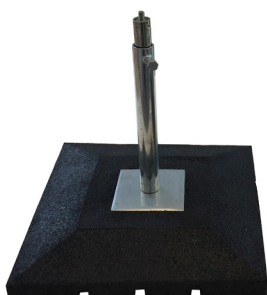
RBR



Rubber
rails

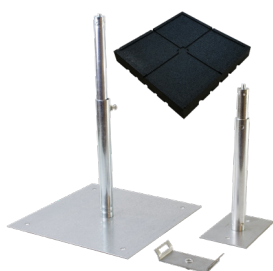
SUPPORT

RTBF-33



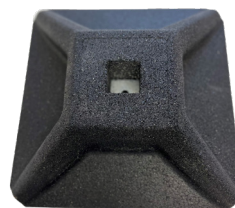
Rubber Telescopic
Base Foot 33

NSTP + MAT



Telescopic
feet and mat

RSF 300



Rubber
square feet

**OTHER SUPPORT
SYSTEM**



Other support
systems

SUSPENSION

ISF / NSF



Double nut suspension
rings

SRN / SRI



Single nut suspension
rings

GPB



Suspension
bands

DOBYGRIP



Wire
Grip



SUSPENSION

BRA



Suspension brackets

CTKN



Beam clamps

CTR / CRC / CBA



Threaded rods & accessories

NEO SUSP / PRL



Fabric suspension bands / Antivibration liner

AIRTIGHTNESS & TAPES

CLIMA-SEAL / IG-621



Acrylic water based sealant

BA / EBA / REBA / ATR



Aluminium tapes

ABT - PBT



Cold shrink tapes

OTHER TAPES



PVC, Duct, Cloth alu duct ...

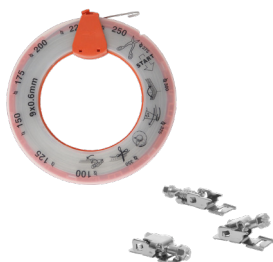
FASTENING BANDS

FBM



Preformed fastening clamp

CBR / CLD



30m fastening band and locking device

MONOFIL



Single wire band

NT

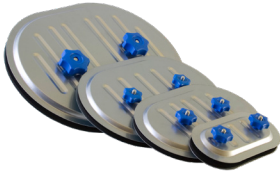


Nylon ties and tool



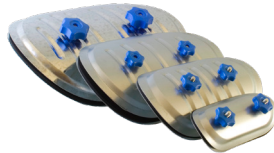
ACCESS DOORS

FAD - Class C



Access doors for rectangular ducting

CAD - Class C



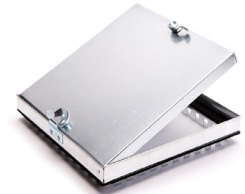
Access doors for round ducting

IAD



Insulated flat access doors for rectangular ducts

TABDOOR



Insulated rectangular access door

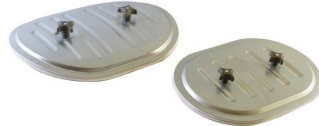
ACCESS DOORS

CAD-SS & FAD-SS



Stainless steel access door

CAD-HT & F AD-HT



High temperature access doors

PROTECT CAD/FAD



Protective access doors

SPECIAL DOORS



Insulated access doors

SCREWS

VDK



Self-drilling screws

VRD



Airtight self-drilling screws

VDPM



Hexagonal self-drilling screws

TRLC

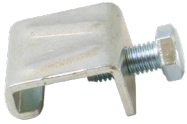


Phillips screws



DUCT AND CHANNEL ACCESSORIES

UFC



Flange clamp

HI



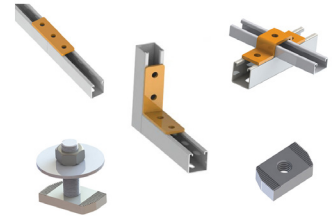
Corners

DBF



Dust blue film

OTHERS



Fixings and accessories for suspension profiles

GASKETING

GT-PE



Gasket Tape

GT-CERAMIC



White ceramic gasket

GT-RUBBER



Sealing rubber gasket

JG



Rubber gasket

FLANGE SYSTEM

BCT



Circular flange system

BOCT



Oval flange system

OUR HISTORY

1985



Creation of the Company

Creation of Climatech by François and Hortense Gohy, 100% family-run company.

1998



Creation of the trade mark Clim

«CLIM®» was created to help Engineers, Entrepreneurs and End Users, to choose the best products, created and selected by Climatech for their quality.

2008



Acquisition of a new factory

To expand its machinery park and product storage to satisfy its growing numbers of customers, Climatech invest in a new 4800m² factory, located in Chaineux.

2012



Spain development

Climatech joins the shareholders of Rami-System, a manufacturer of assembly flanges for ventilations ducts, after more than 10 years of business relationship.

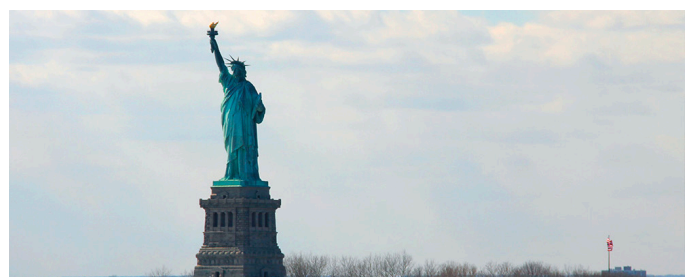
2014



Factory extension

Strengthened by its success, Climatech decides to create a second storage unit and reaches 6 000m² to face the development of its activity.

2016



Branch opening in New York

In order to offer a better service to its north and south American customers, Climatech decides to open a new office in New York, with stock and a commercial office.

2017



A new organization

To hire more employees and strengthen its customer service department, Climatech acquires a building and moves its administrative services to Lasne.

2020



Climatech goes green

Climatech continues its environmental journey (LED lighting, paper tape, ...) with the installation of 1540 photovoltaic panels on the roofs of our factory.

2021



Climatech expands

To keep on providing an excellent service, Climatech has increased its factory by 50% to reach 10 000m². This new space allows the development of new production lines and also offer better warehousing capacity.

2022



Creation of GV CLIM Italia

After many year of collaboration with GLV FLEX ITALIA and its owner Giorgio Valicante, Climatech is proud to announce the acquisition of GLV's flexible ducting division through the creation of GV CLIM Italia.

2023

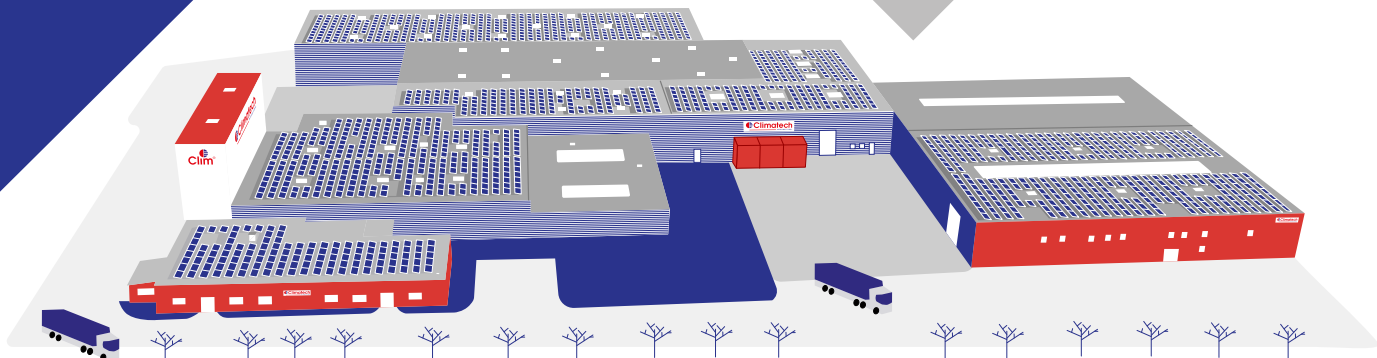


Acquisition of Salpaflex

Climatech has acquired this well-known manufacturer of flexible ducting from Valencia (Spain) to continue with its establishment in the south of Europe, thus expanding its market experience and storage space, as well as allowing a more agile service in Spain and Portugal.

2024





DUCT AND FIXING ACCESSORIES MANUFACTURER

Our vision

Contribute to a better satisfaction of international HVAC stakeholders.

Our mission

Through strong personal long term relationships, built on core values, we supply an evolving range of products to HVAC distributors and OEMs worldwide.

Our Values

Partnership, integrity, respect, honesty, flexibility, responsiveness, responsibility, service, sustainability.

Download our catalogues



Contact us:

90, Route de Beaumont
1380 Lasne - Belgium
T. +32 2 654 12 40
clim@climatech.be
www.climatech.be

