

T - 342

CRANK ARM & CONTROL SWIVEL



General description

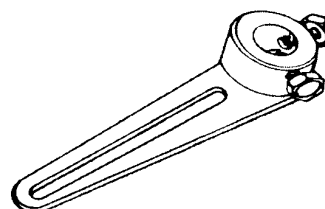
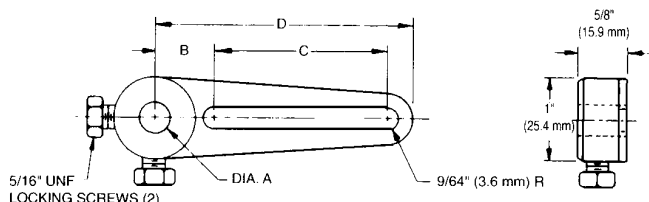
Crank arms and control swivels were originally designed for use in the heating and air conditioning industry. They have also found extensive applications in linkages and controls and for a wide variety of leverage applications in transmitting motion.



Technical specifications

CRANK ARM

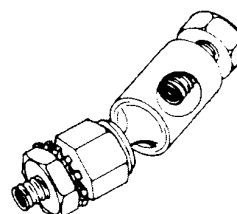
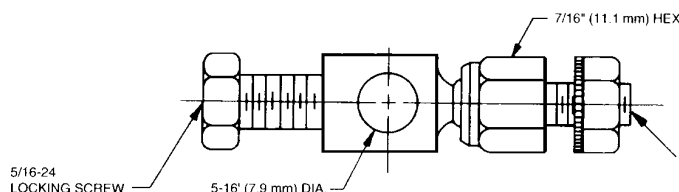
- Manufactured from 12 gauge steel
- Zinc plated and dichromate treated for extra corrosion protection
- Levers are stamped with a scale for precise adjustment of linkage components



DESCRIPTION	A	B	C	D	BOX QUANTITY (PC)
CA-L-1405	1/2"	3/4"	3-7/8"	4-15/16"	10 x 10

CONTROL SWIVEL

- Designed for use with connecting rods 5/16" and 1/4" diameters
- Plated and dichromate treated for extra corrosion protection
- Lock washers and nuts are provided



DESCRIPTION	DIMENSIONS	BOX QUANTITY (PC)
CS-0807	1/4-28" x 7/16" thread size	10 x 25

Information contained herein is based on careful tests and experience. It reflects our knowledge and is for guidance purpose only. It is given in good faith and user should ensure that the product is fit for purpose before any application. The quoted values are average and should not be taken as maximum or minimum values for specific purposes. Manufacturer and distributor are not responsible for any non-recommended use or consequential damage.

2017.05.04