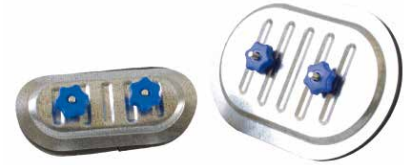


## General description

Access doors allow easy admittance to the ventilation ducting for the purpose of inspection and cleaning.

Access doors are for rectangular ducting (FAD) or for round ducting (CAD).

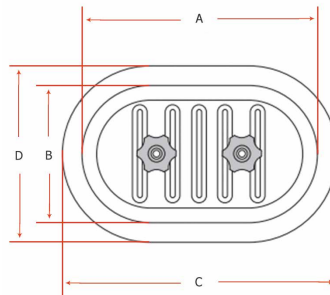
They consist of two panels connected between themselves with two screws, springs and knobs. The inner panel will be slid inside the duct, and the outside panel will then be compressed by tightening both knobs.



## Technical specifications

|   |                   |   |
|---|-------------------|---|
| PANELS  | MATERIAL          | Galvanized steel                                    |
| SEALING GASKET  | TYPE              | High quality EPDM                                   |
|   | DIMENSION         | 6 mm x 15 mm  |
|   | DENSITY           | +/- 33 Kg / m <sup>3</sup>                          |
|   | TEMPERATURE RANGE | - 40 / + 90 °C                                      |
| COMPONENTS COMPRESSION SYSTEM                                     | SCREWS            | 2 screws: M8x40 or M10x40 crimped on internal panel |
|   | SPRINGS           | 2 compressions springs                              |
|   | KNOBS             | 2 ABS knobs with metal insert M8 or M10             |
| Self-adhesive template comes with each door, for accurate cut-out |                   |   |

## Sizes



A & B = opening dimensions  
 C & D = external dimensions

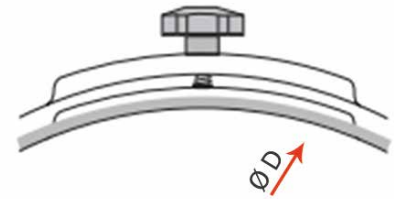
## FAD & CAD

| DOOR TYPE | NOMINAL SIZES (mm) | ACTUAL DIMENSIONS (mm)   |     |     |     |
|-----------|--------------------|--|-----|-----|-----|
|           |                    | The format is oblong, and the radius of the 4 angles is equivalent to the small size divided by 2. |     |     |     |
|           |                    | A  | B   | C   | D   |
| 18        | 180 x 80           | 170  | 72  | 197 | 101 |
| 20        | 200 x 100          | 200  | 100 | 219 | 117 |
| 25        | 250 x 150          | 250  | 150 | 274 | 186 |
| 30        | 300 x 200          | 300  | 200 | 329 | 228 |
| 38        | 400 x 200          | 380  | 180 | 412 | 212 |
| 40        | 400 x 300          | 380  | 280 | 403 | 303 |
| 50        | 500 x 400          | 500  | 400 | 532 | 432 |
| 60        | 600 x 450          | 600  | 450 | 627 | 480 |

Information contained herein is based on careful tests and experience. It reflects our knowledge and is for guidance purpose only. It is given in good faith and user should ensure that the product is fit for purpose before any application. The quoted values are average and should not be taken as maximum or minimum values for specific purposes. Manufacturer and distributor are not responsible for any non-recommended use or consequential damage.

2018.05.02

**T - 395 - FAD & CAD (2/4)**  
**GALVANIZED ACCESS DOORS**  
**FOR RECTANGULAR OR ROUND DUCTING**



**CAD selection chart for round ducting**

| DOOR SIZE<br>DUCT DIA. | 180x80<br>mm | 200x100<br>mm | 250x150<br>mm | 300x200<br>mm | 400x300<br>mm | 500x400<br>mm | 600x450<br>mm |
|------------------------|--------------|---------------|---------------|---------------|---------------|---------------|---------------|
| 100 mm                 | Standard     | -             | +             | -             | -             | -             | -             |
| 125 mm                 | Standard     | -             | +             | -             | -             | -             | -             |
| 140 mm                 | +            | Standard      | +             | -             | -             | -             | -             |
| 150 mm                 | +            | +             | +             | -             | -             | -             | -             |
| 160 mm                 | Standard     | +             | Standard      | -             | -             | -             | -             |
| 180 mm                 | +            | Standard      | +             | -             | -             | -             | -             |
| 200 mm                 | Standard     | Standard      | Standard      | -             | -             | -             | -             |
| 224 mm                 | +            | +             | +             | -             | -             | -             | -             |
| 250 mm                 | +            | Standard      | Standard      | -             | -             | -             | -             |
| 280 mm                 | +            | +             | +             | -             | -             | -             | -             |
| 300 mm                 | +            | +             | +             | -             | -             | -             | -             |
| 315 mm                 | -            | Standard      | Standard      | Standard      | -             | -             | -             |
| 355 mm                 | -            | -             | Standard      | Standard      | -             | -             | -             |
| 400 mm                 | -            | -             | Standard      | Standard      | Standard      | -             | -             |
| 450 mm                 | -            | -             | Standard      | Standard      | Standard      | -             | -             |
| 500 mm                 | -            | -             | Standard      | Standard      | Standard      | -             | -             |
| 550 mm                 | -            | -             | -             | +             | +             | -             | -             |
| 560 mm                 | -            | -             | -             | +             | Standard      | -             | -             |
| 600 mm                 | -            | -             | -             | +             | +             | -             | -             |
| 630 mm                 | -            | -             | -             | +             | Standard      | Standard      | -             |
| 700 mm                 | -            | -             | -             | -             | +             | +             | -             |
| 710 mm                 | -            | -             | -             | -             | Standard      | Standard      | Standard      |
| 800 mm                 | -            | -             | -             | -             | Standard      | Standard      | Standard      |
| 850 mm                 | -            | -             | -             | -             | +             | +             | +             |
| 900 mm                 | -            | -             | -             | -             | Standard      | Standard      | Standard      |
| 1000 mm                | -            | -             | -             | -             | +             | Standard      | Standard      |
| 1120 mm                | -            | -             | -             | -             | +             | Standard      | Standard      |
| 1250 mm                | -            | -             | -             | -             | +             | Standard      | Standard      |
| 1400 mm                | -            | -             | -             | -             | -             | -             | Standard      |
| 1500 mm                | -            | -             | -             | -             | -             | -             | Standard      |
| 1600 mm                | -            | -             | -             | -             | -             | -             | Standard      |
| 1800 mm                | -            | -             | -             | -             | -             | -             | Standard      |

+ : Available on request  
 - : Not available

Information contained herein is based on careful tests and experience. It reflects our knowledge and is for guidance purpose only. It is given in good faith and user should ensure that the product is fit for purpose before any application. The quoted values are average and should not be taken as maximum or minimum values for specific purposes. Manufacturer and distributor are not responsible for any non-recommended use or consequential damage.

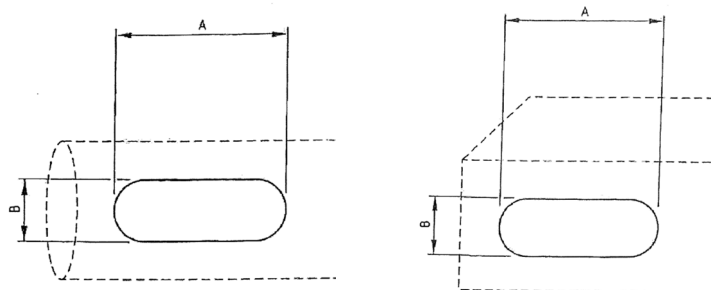
2018.05.02

**SELECTION OF  
 CURVING DIAMETERS**

| DUCT DIAMETER (mm) | RECOMMENDED DOOR CURVING DIAMETER (mm) |
|--------------------|--|
| 80 - 120           | 100                                    |
| 121 - 150          | 125                                    |
| 151 - 190          | 160                                    |
| 191 - 240          | 200                                    |
| 241 - 300          | 250                                    |
| 301 - 340          | 315                                    |
| 341 - 380          | 355                                    |
| 381 - 430          | 400                                    |
| 431 - 480          | 450                                    |
| 481 - 530          | 500                                    |
| 531 - 600          | 560                                    |
| 601 - 670          | 630                                    |
| 671 - 750          | 710                                    |
| 751 - 850          | 800                                    |
| 851 - 950          | 900                                    |
| 951 - 1050         | 1000                                   |
| 1050 - 1150        | 1120                                   |
| 1151 - 1300        | 1250                                   |

**Recommendations (based on EN 12097)**

| ROUND DUCTING      |  | RECTANGULAR DUCTING |  |
|--------------------|--|---------------------|--|
| Duct diameter (mm) | Access door minimum size (mm)<br>A x B | Duct height (mm)    | Access door minimum size (mm)<br>A x B |
| 100 - 200          | 180 x 80                               | 200                 | 180 x 80                               |
| 200 - 315          | 250 x 150                              | 200 - 400           | 300 x 200                              |
| 315 - 500          | 300 x 200                              | 400 - 500           | 400 x 300                              |
| 500                | 400 x 300                              | 500                 | 500 x 400                              |

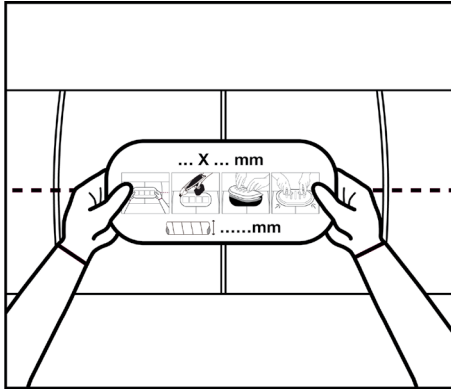


Access door needs to be fitted :

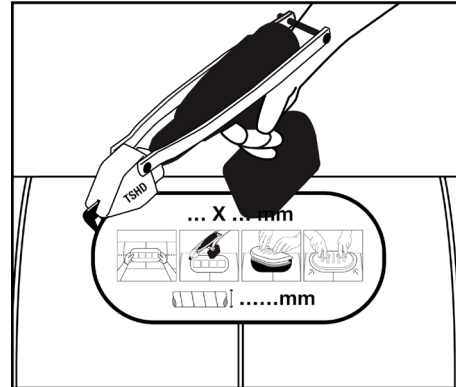
- before and after every fitting (dampers, fire dampers, filters, duct fans, duct heaters,...)
- after more than one change of direction of more than 45° as from the access door
- after more than one change of airflow as from the access door
- at least every 7,5 m

Information contained herein is based on careful tests and experience. It reflects our knowledge and is for guidance purpose only. It is given in good faith and user should ensure that the product is fit for purpose before any application. The quoted values are average and should not be taken as maximum or minimum values for specific purposes. Manufacturer and distributor are not responsible for any non-recommended use or consequential damage. 2018.05.02

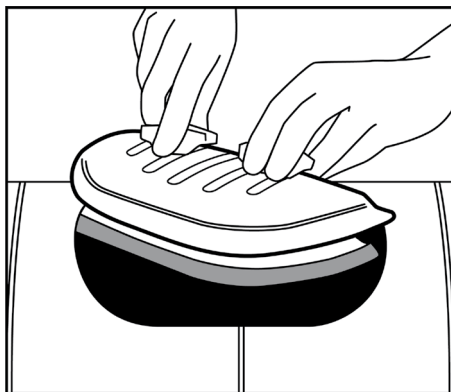
## Application



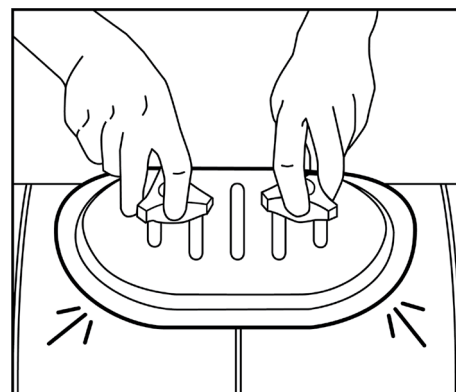
1. Stick self-adhesive template on to duct  
(a template is provided with each door)



2. Using Turbo Shears or similar cut around  
template taking care not to exceed the size of  
the template (the door will function correctly  
when cut to template size +0 mm -3 mm).  
For details of the Turbo Shear please refer to  
Malco Tools Datasheet



3. Install door by unscrewing the hand  
knobs until thread is level with top of bolt.  
Using both hands place the door in the  
hole at an angle.



4. Turn straight and pull out slightly to  
align. Then tighten knobs.