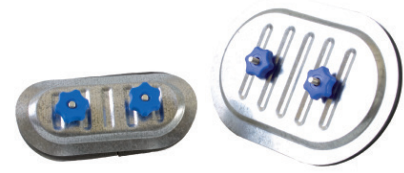


General description

Access doors allow easy admittance to the ventilation ducting for the purpose of inspection and cleaning.

Access doors are for rectangular ducting (FAD) or for round ducting (CAD).

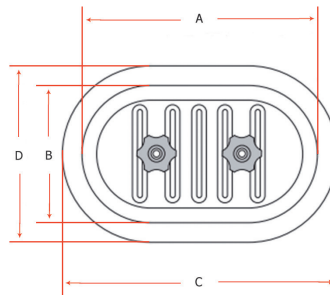
They consist of two panels connected between themselves with two screws, springs and knobs. The inner panel will be slid inside the duct, and the outside panel will then be compressed by tightening both knobs.



Technical specifications

PANELS	MATERIAL	Galvanized steel
SEALING GASKET	TYPE	High quality EPDM
	DIMENSION	6 mm x 15 mm
	DENSITY	+/- 33 Kg / m ³
	TEMPERATURE RANGE	- 40 / + 90 °C
COMPONENTS COMPRESSION SYSTEM	SCREWS	2 screws: M8x40 or M10x40 crimped on internal panel
	SPRINGS	2 compressions springs
	KNOBS	2 ABS knobs with metal insert M8 or M10
Self-adhesive template comes with each door, for accurate cut-out		

Sizes



A & B = opening dimensions
 C & D = external dimensions

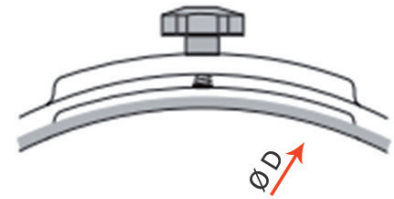
FAD & CAD

DOOR TYPE	NOMINAL SIZES (mm)	ACTUAL DIMENSIONS (mm)			
		The format is oblong, and the radius of the 4 angles is equivalent to the small size divided by 2.			
		A	B	C	D
18	180 x 80	170	72	197	101
20	200 x 100	200	100	219	117
25	250 x 150	250	150	274	186
30	300 x 200	300	200	329	228
40	400 x 300	380	280	403	303
50	500 x 400	500	400	532	432
60	600 x 450	600	450	627	480

Information contained herein is based on careful tests and experience. It reflects our knowledge and is for guidance purpose only. It is given in good faith and user should ensure that the product is fit for purpose before any application. The quoted values are average and should not be taken as maximum or minimum values for specific purposes. Manufacturer and distributor are not responsible for any non-recommended use or consequential damage.

2016.04.14

T - 395 - FAD & CAD (2/4)
GALVANIZED ACCESS DOORS
FOR RECTANGULAR OR ROUND DUCTING



CAD selection chart for round ducting

DOOR SIZE DUCT DIA.	180x80 mm	200x100 mm	250x150 mm	300x200 mm	400x300 mm	500x400 mm	600x450 mm
100 mm	Standard	-	+	-	-	-	-
125 mm	Standard	-	+	-	-	-	-
140 mm	+	Standard	+	-	-	-	-
150 mm	+	+	+	-	-	-	-
160 mm	Standard	+	Standard	-	-	-	-
180 mm	+	Standard	+	-	-	-	-
200 mm	Standard	Standard	Standard	-	-	-	-
224 mm	+	+	+	-	-	-	-
250 mm	+	Standard	Standard	-	-	-	-
280 mm	+	+	+	-	-	-	-
300 mm	+	+	+	-	-	-	-
315 mm	-	Standard	Standard	Standard	-	-	-
355 mm	-	-	Standard	Standard	-	-	-
400 mm	-	-	Standard	Standard	Standard	-	-
450 mm	-	-	Standard	Standard	Standard	-	-
500 mm	-	-	Standard	Standard	Standard	-	-
550 mm	-	-	-	+	+	-	-
560 mm	-	-	-	+	Standard	-	-
600 mm	-	-	-	+	+	-	-
630 mm	-	-	-	+	Standard	Standard	-
700 mm	-	-	-	-	+	+	-
710 mm	-	-	-	-	Standard	Standard	Standard
800 mm	-	-	-	-	Standard	Standard	Standard
850 mm	-	-	-	-	+	+	+
900 mm	-	-	-	-	Standard	Standard	Standard
1000 mm	-	-	-	-	+	Standard	Standard
1120 mm	-	-	-	-	+	Standard	Standard
1250 mm	-	-	-	-	+	Standard	Standard
1400 mm	-	-	-	-	-	-	Standard
1500 mm	-	-	-	-	-	-	Standard
1600 mm	-	-	-	-	-	-	Standard
1800 mm	-	-	-	-	-	-	Standard

+ : Available on request
- : Not available

Information contained herein is based on careful tests and experience. It reflects our knowledge and is for guidance purpose only. It is given in good faith and user should ensure that the product is fit for purpose before any application. The quoted values are average and should not be taken as maximum or minimum values for specific purposes. Manufacturer and distributor are not responsible for any non-recommended use or consequential damage.

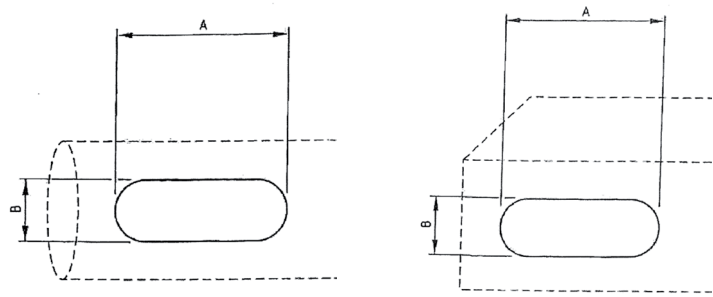
2016.04.14

SELECTION OF CURVING DIAMETERS

DUCT DIAMETER (mm)	RECOMMENDED DOOR CURVING DIAMETER (mm)
80 - 120	100
121 - 150	125
151 - 190	160
191 - 240	200
241 - 300	250
301 - 340	315
341 - 380	355
381 - 430	400
431 - 480	450
481 - 530	500
531 - 600	560
601 - 670	630
671 - 750	710
751 - 850	800
851 - 950	900
951 - 1050	1000
1050 - 1150	1120
1151 - 1300	1250

Recommendations (based on EN 12097)

ROUND DUCTING		RECTANGULAR DUCTING	
Duct diameter (mm)	Access door minimum size (mm) A x B	Duct height (mm)	Access door minimum size (mm) A x B
100 - 200	180 x 80	200	180 x 80
200 - 315	250 x 150	200 - 400	300 x 200
315 - 500	300 x 200	400 - 500	400 x 300
500	400 x 300	500	500 x 400

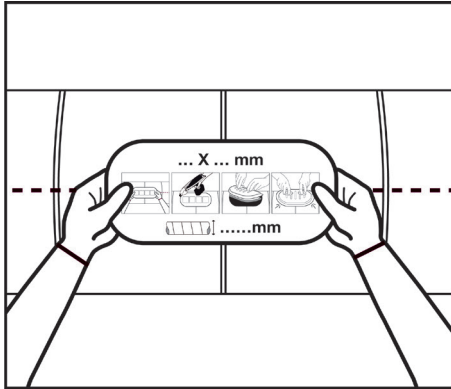


Access door needs to be fitted :

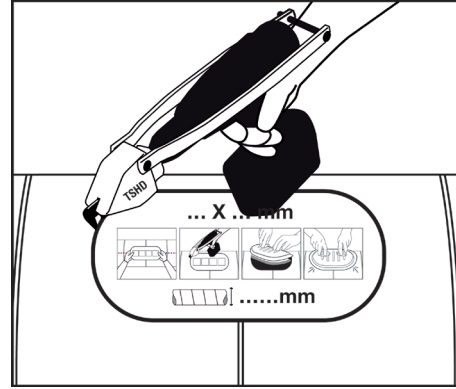
- before and after every fitting (dampers, fire dampers, filters, duct fans, duct heaters,...)
- after more than one change of direction of more than 45° as from the access door
- after more than one change of airflow as from the access door
- at least every 7,5 m

Information contained herein is based on careful tests and experience. It reflects our knowledge and is for guidance purpose only. It is given in good faith and user should ensure that the product is fit for purpose before any application. The quoted values are average and should not be taken as maximum or minimum values for specific purposes. Manufacturer and distributor are not responsible for any non-recommended use or consequential damage. 2016.04.14

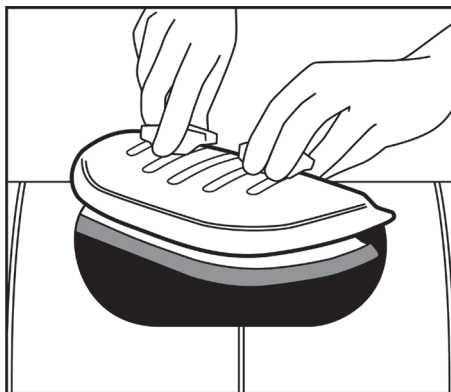
Application



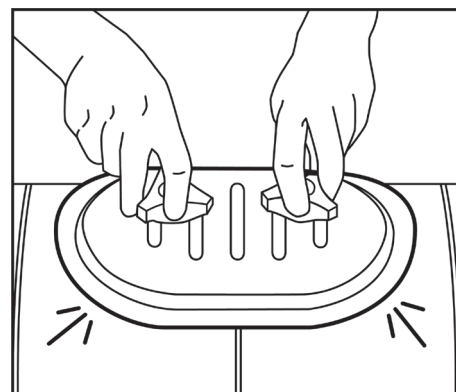
1. Stick self-adhesive template on to duct
(a template is provided with each door)



2. Using Turbo Shears or similar cut around
template taking care not to exceed the size of
the template (the door will function correctly
when cut to template size +0 mm -3 mm).
For details of the Turbo Shear please refer to
Malco Tools Datasheet



3. Install door by unscrewing the hand
knobs until thread is level with top of bolt.
Using both hands place the door in the
hole at an angle.



4. Turn straight and pull out slightly to
align. Then tighten knobs.