

T - 4669 - B-KSF / B-SQF

KIT SQUARE FOOT / SQUARE FOOT

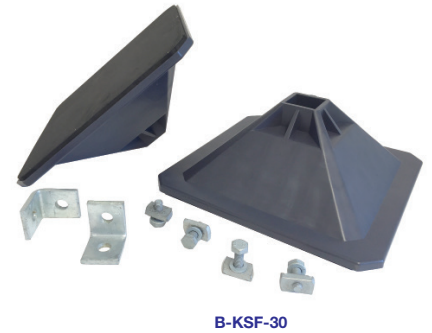


General description

The kit square foot is designed to support metallic structures on roofs or in industrial spaces. Suitable for 41 x 41 mm slotted channel rails.

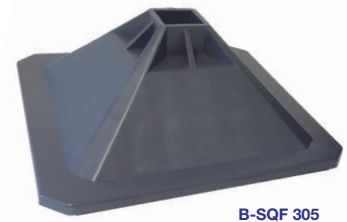
The kit square foot (B-KSF - 30 & B-KSF - 50) includes :

- *2 molded HDPE feet + insulating mats
- *2 angle brackets
- *4 hexagonal head screws M10 x 25 mm
- *4 M10 flat washers
- *4 M10 nuts
- *Rails not supplied



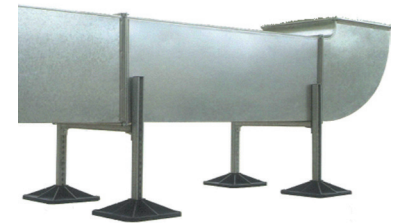
The square foot (B-SQF-305 & B-SQF-500) includes :

- *2 molded plastic of high density polyethylene feet
- *2 glued insulating mats



Features :

- *Excellent antivibration performance
- *Great flexibility: adjustable height / weight
- *Easy and fast installation
- *Preserves the waterproof membrane of the roof
- *Makes roof maintenance easier



WARNING : Incompatibility between PVC roof and composite rubber

Technical specifications

MATERIAL	FOOT	High density polyethylene (HDPE)
DIMENSIONS	B-SQF - 305	305 x 305 x 120 mm
	B-SQF - 500	500 x 500 x 120 mm
MAXIMUM LOAD PER FOOT	305 x 305	350 Kg*
	500 x 500	450 Kg*
RECOMMENDED TEMPERATURE		-30°C / +110°C

* The support rails not being supplied by us, loads are given for information. Please refer to the technical data of rails to know the maximum load.

Application

Designed to support ventilation ducts, cables trays, pipes.

Information contained herein is based on careful tests and experience. It reflects our knowledge and is for guidance purpose only. It is given in good faith and user should ensure that the product is fit for purpose before any application. The quoted values are average and should not be taken as maximum or minimum values for specific purposes. Manufacturer and distributor are not responsible for any non-recommended use or consequential damage.

2016.06.16